

Daytrips With **IMPACT** 2009



Welcome to the Impact Group PLC 2009 Brochure

May I start by saying a big thank you to all our customers for making 2008 another successful year for Impact Coaches. Without your continuing support we wouldn't still be one of London's leading daytrip companies.

We have kept the pick up codes from last year as customers found it invaluable in aiding the process of booking daytrips.

First time customers will see that these codes correspond to the table at the back, which will give you the time of pickups.

We have kept in many of your favourite trips but added some new and exciting daytrips. There is a wide variety to offer every member of the family. We have stated if admission is included on relevant trips. Upon booking your day/weekend trip you will receive a guide to your destination.

We recommend that you book as early as possible on that and every trip so we can avoid disappointment when we sometimes have to cancel.

Travelling abroad – Important passport information.

We would like to advise you that to travel to France, Belgium and Germany, you would need a FULL TEN - YEAR PASSPORT. Non-British passport holders may require a visa. Please check with relevant embassy. Credit card payments are taken at the hypermarket (when using your credit card – you must present your passport). TOBACCO AND CIGARETTES ARE NOT SOLD AT CITE EUROPE OR AUCHAN.

ALCOHOL Coaches are monitored regarding their weight for safety reasons. Each passenger will only be allowed to bring back 10 litres of alcohol. For example, one pack of beer is approximately 6 litres; therefore we have to restrict limits to one pack per person plus wines/spirits totalling 10 litres per person. Our drivers are NOT allowed to exceed the set limits and are authorised to leave behind any purchases or passengers who are detained by Customs and Excise.

CIGARETTES We have now established that the total number of cigarettes that can be brought back from Belgium back through France is now 1000 per passenger without needing a movement docket. Any person wanting to carry between 1200 and 2000 cigarettes through France must present himself/herself at the first customs office in France for a 'document simplified accompagnement' and pay the tax. It is forbidden to carry more than 2000 cigarettes and there are various penalties for this. Our drivers are NOT allowed to exceed the set limits and are authorised to leave behind any excess

purchases or passengers who are detained by Customs and Excise. Rolling tobacco is not specifically mentioned; the limit is therefore that which the passenger is carrying for his/her own use.

Customs regulations require us to ask for your passport numbers every time you take a trip abroad. Please fill in the section on the booking form or make sure you have all the relevant information when you call or visit us in the office.

As always your comments are valued and appreciated. Without public support we couldn't manage to keep up the high standards you expect from us.

In order to offer you a more efficient and streamlined service, it is our intention to send offers and promotions in the form of an e-newsletter. To ensure you receive any future mailings in this format, please supply us with an up to date e-mail address. Register by sending your name, full postal address and e-mail address to sales@impactgroup.co.uk

Booking Methods

- **Phone:** Simply call **020 8579 9922** with your credit/debit card details.
- **Booking form:** Fill in the booking form at the back of the brochure, and send it with a cheque to our booking office.
- **In Person:** Visit our booking office at
 - **1 Leighton Road**
 - **Ealing**
 - **London**
 - **W13 9EL**
- **E-mail:** **sales@impactgroup.co.uk**

Important information

- Coaches will depart at the times stated.
- Our drivers are instructed not to wait after the scheduled times.
- We will not be held responsible for people who turn up late for departures.
- Alternative vehicles may be used in unforeseen circumstances.

N.B All prices and dates are correct at time of going to press. Prices and dates are subject to change without prior notice.

DIARY

JANUARY	TRIP	CODE	PRICE		PAGE
			Adult	Child & O.A.P.	
Sat 10 th	Boulogne Old Town	A1	£17.00 per seat		13
Sat 24 th	Ostend	A1	£29.00 per seat		14

FEBRUARY	TRIP	CODE	PRICE		PAGE
			Adult	Child & O.A.P.	
Sat 7 th	Calais Town	A1	£17.00 per seat		15
Sat 14 th	Cotswolds in the Winter	A4	£14.00	£12.00	23
Sat 14 th	Paris Weekend	A1	£85.00 per seat		16
Sat 28 th	Bruges	A1	£29.00 per seat		14

MARCH	TRIP	CODE	PRICE		PAGE
			Adult	Child & O.A.P.	
Sat 7 th	Bury St.Edmunds	A8	£15.00	£13.00	19
Wed 11 th	Boulogne	A1	£28.00 per seat		13
Sat 14 th	Clarks Village	A4	£15.00	£13.00	18
Sat 28 th	Amsterdam	A7	£38.00 per seat		15

APRIL	TRIP	CODE	PRICE		PAGE
			Adult	Child & O.A.P.	
Sat 4 th	Swanage	A8	£15.00	£13.00	10
Sat 11 th	Stonehenge & Salisbury	A4	£14.00	£12.00	21
Sat 11 th	Cologne Easter Weekend	A7	£89.00 per seat		17
Sun 12 th	Lego / Chessington	A4	£13.00	£11.00	26
Mon 13 th	Thorpe Park	A4	£11.00	£9.00	25
Thurs 16 th	Cambridge/Ely	A4	£14.00	£12.00	23
Sat 18 th	Ostend	A1	£29.00 per seat		14
Sat 25 th	Calais	A1	£28.00 per seat		15

MAY	TRIP	CODE	PRICE		PAGE
			Adult	Child & O.A.P.	
Sat 2 nd	Spalding Flower Show	A4	£17.00	£12.00	24
Sat 2 nd	Boulogne	A1	£28.00 per seat		13
Mon 4 th	Jack in the green	A4	£14.00	£12.00	24
Sat 9 th	Hayling Island	A4	£17.00	£12.00	8
Sun 10 th	Southend	A4	£14.00	£12.00	9
Sat 16 th	Poole/Ch.Church/Bourn	A4	£14.00	£12.00	11
Sun 17 th	Southampton / Portsmouth	A4	£14.00	£12.00	13
Wed 20 th	Stratford / Warwick castl	A4	£14.00	£12.00	20
Sat 23 rd	Bruges	A1	£29.00 per seat		14
Sat 23 rd	King Arthur's Labyrinth	A2	£20.00	£18.00	27
Mon 25 th	Camber Sands or Rye	A4	£14.00	£12.00	9
Mon 25 th	Lille (Bank Holiday)	A1	£29.00 per seat		15
Wed 27 th	Longleat Safari	A4	£29.00	£24.00	26
Sat 30 th	Great Yarmouth	A8	£17.00	£15.00	10

JUNE	TRIP	CODE	PRICE		PAGE
			Adult	Child & O.A.P.	
Sat 6 th	Isle of Wight Tour	A3	£29.00 per seat		20
Sat 6 th	Oxford Castle Unlocked	A4	£14.00	£12.00	21
Sun 7 th	Swanage	A8	£15.00	£13.00	10
Wed 10 th	Midweek Calais	A1	£28.00 per seat		15
Thurs 11 th	Cambridge/Ely	A4	£14.00	£12.00	23
Sat 13 th	Bath	A4	£15.00	£13.00	21
Sat 13 th	Rotterdam	A7	£38.00 per seat		16
Sun 14 th	Cheddar G/Wookey H	A8	£15.00	£13.00	22
Wed 17 th	Margate/Ramsgate/Bdst	A4	£15.00	£13.00	8
Sat 20 th	Lille	A1	£29.00 per seat		15
Sat 20 th	Weymouth or Wyke.R	A8	£16.00	£13.00	12
Sun 21 st	Brighton or Hove	A4	£14.00	£12.00	9
Mon 22 nd	Poole/Ch Church/bourn	A4	£14.00	£12.00	11
Wed 24 th	Stonehenge & Salisbury	A4	£14.00	£12.00	21
Sat 27 th	Boulogne	A1	£28.00 per seat		13
Sat 27 th	Wye Valley Tour	A8	£17.00	£14.00	22
Sun 28 th	Merton Abbey Mills	A4	£10.00 per seat		18

JULY	TRIP	CODE	PRICE		PAGE
			Adult	Child & O.A.P.	
Wed 1 st	Clacton/Walton on Naze	A4	£14.00	£12.00	10
Fri 3 rd	Hayling Island	A4	£17.00	£12.00	8
Sat 4 th	Le Touquet	A1	£31.00 per seat		16
Sat 4 th	Eastbourne	A4	£14.00	£12.00	11
Sun 5 th	Longleat Safari	A4	£29.00	£24.00	26
Sun 5 th	Southampton / Portsmouth	A4	£14.00	£12.00	13
Sat 11 th	Cotswolds Tour	A4	£14.00	£12.00	23
Sat 11 th	RNAS Yeovilton Air day	A4	£36.00	£34.00	24
Fri 17 th	Poole/Ch Church/Bourn	A4	£14.00	£12.00	11
Sat 18 th	Bruges	A1	£29.00 per seat		14
Sat 18 th	W/stable Oyster Fest	A4	£14.00	£12.00	24
Fri 24 th	Drayton Man. Theme Pk	A8	£15.00	£13.00	26
Sat 25 th	Stratford / Warwick Cstl	A4	£14.00	£12.00	20
Sat 25 th	Bury St.Edmunds	A8	£15.00	£13.00	19
Sat 25 th	Calais	A1	£28.00 per seat		15
Sun 26 th	Kennet & Avon Canal	A4	£20.00	£17.00	27
Wed 29 th	Canterbury	A4	£14.00	£12.00	23
Fri 31 st	Brighton or Hove	A4	£14.00	£12.00	9

AUGUST	TRIP	CODE	PRICE		PAGE
			Adult	Child & O.A.P.	
Sat 1 st	Amsterdam	A7	£38.00 per seat		15
Sat 1 st	Thorpe Park	A4	£11.00	£9.00	25
Mon 3 rd	Poole, Christ.Ch or Bourn	A4	£14.00	£12.00	11
Wed 5 th	Wye Valley Tour	A8	£17.00	£14.00	22
Sat 8 th	Lille	A1	£29.00 per seat		15
Mon 10 th	Great Yarmouth	A8	£17.00	£15.00	10
Wed 12 th	Midweek Calais	A1	£28.00 per seat		15
Mon 17 th	Weymouth or Wyke.R	A8	£16.00	£13.00	12
Wed 19 th	Camber Sands or Rye	A4	£14.00	£12.00	9
Fri 21 st	Margate/Ramsgate/Bdst	A4	£15.00	£13.00	8
Sat 22 nd	Ostend	A1	£29.00 per seat		14
Sat 22 nd	Bournemouth Air Show	A1	£16.00	£13.00	23
Sun 23 rd	Hastings or Bexhill	A4	£14.00	£12.00	12
Fri 28 th	Legoland/Chessington	A4	£13.00	£11.00	26
Sat 29 th	Bruges Weekend	A1	£85.00 per seat		14
Sat 29 th	Isle of Wight Tour	A3	£29.00 per seat		20
Sun 30 th	Ypres	A1	£38.00 per seat		17

Mon 31 st	Brighton or Hove	A4	£14.00	£12.00	9
----------------------	------------------	----	--------	--------	---

SEPTEMBER	TRIP	CODE	PRICE		PAGE
			Adult	Child & O.A.P.	
Wed 2 nd	Midweek Calais	A1	£28.00	per seat	15
Sat 5 th	Bruges	A1	£29.00	per seat	14
Mon 7 th	Cheddar G/Wookey H	A8	£15.00	£13.00	22
Sat 12 th	Bath	A4	£15.00	£13.00	21
Sun 13 th	Merton Abbey Mills	A4	£10.00	per seat	18
Sat 19 th	Boulogne	A1	£28.00	per seat	13
Sat 19 th	Stratford / Warwick Cstl	A4	£14.00	£12.00	20
Sat 26 th	Oxford Castle Unlocked	A4	£14.00	£12.00	21

OCTOBER	TRIP	CODE	PRICE		PAGE
			Adult	Child & O.A.P.	
Sat 3 rd	Calais	A1	£28.00	per seat	15
Sat 10 th	Blackpool	A8	£26.00	£23.00	12
Sat 17 th	Boulogne	A1	£28.00	per seat	13
Sat 24 th	Isle of Wight Tour	A3	£29.00	per seat	20
Sat 24 th	Amsterdam	A7	£38.00	per seat	15
Sun 25 th	Oxford Castle Unlocked	A4	£14.00	£12.00	21
Sat 31 st	Guildford Spectrum	A4	£13.00	£11.00	27

NOVEMBER	TRIP	CODE	PRICE		PAGE
			Adult	Child & O.A.P.	
Wed 11 th	Midweek Calais	A1	£28.00	per seat	15
Sat 14 th	Cotswolds Tour	A4	£14.00	£12.00	23
Sat 21 st	Boulogne	A1	£28.00	per seat	13
Sat 28 th	Bluewater	A4	£11.50	per seat	18

DECEMBER	TRIP	CODE	PRICE		PAGE
			Adult	Child & O.A.P.	
Sat 5 th	Calais	A1	£28.00	per seat	15
Sat 5 th	Bicester Shopping	A4	£13.00	per seat	19
Sun 6 th	Bruges Xmas Market	A1	£29.00	per seat	14
Sun 6 th	Dickensian Xmas Mkt	A4	£15.00	£13.00	25
Sun 13 th	Boulogne	A1	£28.00	per seat	13
Sun 20 th	Xmas lights with Santa	A6	£ 9.00	£ 7.00	25

COASTAL TRIPS

HAYLING ISLAND, HAVANT OR EMSWORTH

Hayling Island offers outstanding Blue Flag award beaches in a natural environment, preserved because of its exceptional flora and fauna. It is a truly delightful place to relax. Staunton Country Park is a gem just outside of Havant, with amazing gardens, a tropical glasshouse and an Amazonian water lily. Fun for all the family can be found on the ornamental farm with the friendly farmyard animals.

Havant Set in beautiful southern England, Havant is on the rural coast and is the adventure playground of the south. It is a haven for a relaxing break, and equally, activity-seeking visitors, possessing excellent watersports and leisure pursuits.

Emsworth is a picturesque delight, with old streets of Georgian houses leading to the waterfront. There is a working wooden boat yard at Dolphin Quay, a busy harbour and lots of little specialist shops, as well as fantastic restaurants, pubs and cafes.

SAT 9TH MAY, FRI 3RD JULY

PRICES £17.00 £12.00

MARGATE – RAMSGATE – BROADSTAIRS



Margate has every ingredient of a great seaside. Glorious golden sand, cliff top walks, amusements and fun parks, a casino, great restaurants, gardens, museums and a pleasant old town and harbour. It has something to suit every taste.

Ramsgate, the town and Royal Harbour still capture the hearts and imaginations of all who visit. The elegant and graceful Victorian architecture, which sits comfortably alongside the much older fishermen's cottages, provide a beautiful backdrop to a vibrant modern town.

Broadstairs was once a favourite holiday place of Charles Dickens, the town still retains that lovely old world feel, with a multitude of historic pantiled buildings, seven sandy beaches and bays. The harbour at Broadstairs is a beautiful setting and gives the area a look of coming straight out of a Dickens novel.

WED 17TH JUNE, FRI 21ST AUG

PRICE £15.00 £13.00

BRIGHTON OR HOVE



Take your pick from these two lovely seaside resorts, both very different. Brighton being a busy bustling town with many different attributes, stroll along the pebble beach, ride the dodgems on the pier while eating your candyfloss. Visit the Lanes to find that antique you have wanted for years. Hove on the other hand has a more relaxed atmosphere, more suited to the peace loving passengers on our coach trips.

**SUN 21ST JUNE, FRI 31ST JULY
& MON 31ST AUG**

PRICE £14.00 £12.00

SOUTHEND

Southend-on-Sea, situated at the mouth of the Thames Estuary, has long been a favourite seaside resort, with its close proximity to London. Southend is famous for its beach. The most notable landmark is that of the 1.3 mile (2km) long pier which extends out into the Estuary – it is the longest pleasure pier in the world. Southend is also famous for the Golden Mile of amusement arcades and attractions, including the Kursall bowling alley and bar, Peter Pan's Adventure Island, and a wide range of shops in the High Street, including The Royals Shopping Centre.

SUN 10TH MAY

PRICE £14.00 £12.00

CAMBER SANDS OR RYE

The beach in Camber is famous for its long ridges of sand dunes leading down to miles of soft golden sands. If you want more excitement then you can buy a day pass for Pontins and take advantage of all the facilities they have to offer.

The Ancient Town of Rye was mentioned in the Domesday Book and in the Cinque Port Charters in 1115. When you have explored the higgledy-piggledy streets and alleyways, visit the museums and enjoyed browsing in the specialist shops, there are plenty of delightful teashops serving Sussex cream teas and lunches or quirky old inns to welcome and refresh you.

**MON 25TH MAY &
WED 19TH AUGUST**

PRICE £14.00 £12.00

GREAT YARMOUTH

Great Yarmouth has a glorious sandy beach stretching almost continuously for over 15 miles, from Winterton in the north to Hopton in the south. They are safe and clean, which set the scene for hours of seaside enjoyment. Great Yarmouth has a rich and proud maritime heritage and once boasted of being one of the wealthiest towns in Britain. All in all it's a great place to visit.

**SAT 30TH MAY &
MON 10TH AUG**

PRICE £17.00 £15.00

SWANAGE



The town, originally a small port and fishing village flourished in the Victorian era, when it first became a significant quarrying port and later a seaside resort for the rich of the day. Today the town remains a popular tourist resort, this being the town's primary industry, with many thousands of visitors coming to the town during the peak summer season, drawn by the bay's sandy beaches, restored pier and other attractions.

SAT 4th APRIL & SUN 7th JUNE

PRICE £15.00 £13.00

CLACTON ON SEA or WALTON-ON-NAZE

Clacton has something to offer everyone, an award winning beach, fun-packed pier, beautifully maintained sea-front gardens, amusements, water sports and newly refurbished leisure centre, indeed all the attractions you would expect from a traditional seaside resort and one of the east coast's most popular destinations.



Walton is a traditional seaside town with many of its original features still evident today. It has the 2nd longest pier in Britain with rides, ten-pin bowling etc; buy a wristband, one price to pay-play all day! With plenty of shops, cafes and restaurants there is plenty to offer all the family.

WED 1ST JULY

PRICE £14.00 £12.00

EASTBOURNE

Undoubtedly the most popular resort on the south coast, it has not lost touch with the requirements of its visitors. A three-tier promenade fringed by seascapes, and magnificent hotels. Eastbourne also has a modern shopping centre and an abundance of quality restaurants.

SAT 4TH JULY

PRICE £14.00 £12.00

POOLE, CHRISTCHURCH OR BOURNEMOUTH

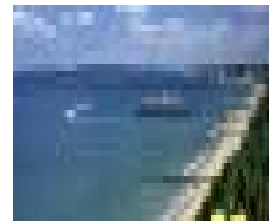
Poole boasts one of the largest natural harbours in the world and is a place of great beauty. Visit Brownsea Island for the day. Its 500 acres are home to the red squirrel, 100 peacocks and a fabulous bird sanctuary. If you enjoy watersports, Poole is definitely the place for you, the choice is endless from Sailing, Water-skiing, Paragliding and Jet Skis to the more sedate



Pedaloos and Boat Cruises. Go out and about in Poole and visit the famous Poole Pottery Business or stroll along the quay and watch the fishing boats and yachts sail by. Learn more by going to the Waterfront museum where you will hear the Smuggler's tale!

Christchurch is uniquely situated on the shores of its own harbour, close to the magnificent Dorset World Heritage Coast and the tranquil New Forest National Park. The combination of fascinating heritage, beautiful coastline and countryside and wide variety of attractions provide all the ingredients to make your holiday or short break extra special.

Bournemouth is renowned for its excellent tourist attractions, none more so than its beaches. Bournemouth boasts seven miles of golden sands and clear blue water. Bournemouth was the winner of "Best UK Resort for group's award from the 2008 Group Leisure Awards" Its one of those timeless resorts that has everything you could want, blending the contemporary with traditional to ensure that you are truly spoilt for choice.



SAT 16TH MAY, MON 22ND JUNE

PRICE £16.00 £13.00

FRI 17TH JULY & MON 3RD AUG

WEYMOUTH OR WYKE REGIS

Weymouth's crowning glory is its award-winning beach; it's soft, safe and sandy, great for kids. Weymouth's fame goes back over 200 years and has always been a favoured holiday destination, with the Dorset hills on one side and the beautiful sweeping bay on the other. Weymouth offers a variety of places to visit and things to do, it will amaze you.

Wyke Regis beach is mainly known to the locals and lies away from the hustle and bustle of Weymouth Town centre. There is also the castle and gardens which look out onto Portland Harbour and is a charming place to relax in the summer amongst the flowers. The castle itself is one of Henry VIII's Device forts built in the 1530s, today the castle is a ruin where most has fallen into the sea, parts of it still remain and it can be easily accessed through the small park and gardens.



Sat 20th JUNE & MON 17th AUG

PRICE £16.00 £13.00

HASTINGS or BEXHILL

Deep below the new Priory Meadow shopping centre, at the heart of the modern town, lays the original port of Hastings. It nestles between the East and West hills and the old town still possess real charm, filled with half-timbered houses, narrow streets and passage ways (known locally as *twittens*). The town retains a strong maritime tradition, the Shipwreck Heritage Centre, Fisherman's Museum and Underwater World, always popular with children.

Bexhill is renowned for its bracing and equable climate since Victorian times and is a town that has been a well kept secret by those visitors who return year after year. Set in the midst of 1066 country, Bexhill offers a quiet charm missing from many larger, well-known seaside resorts.

SUN 23RD AUG

PRICE £14.00 £12.00

BLACKPOOL

Blackpool illuminations are considered to be the greatest free light show and brings glowing warmth to the coolest October evening. The illuminations have been a major part of Blackpool's attraction since 1879 when they were described as "Artificial Sunshine" and have been a guiding light for visitors ever since. Drivers hours permitting, we will try to incorporate a driven tour of the lights.

SAT 10TH OCT

PRICE £26.00 £23.00

SOUTHAMPTON or PORTSMOUTH

Southampton has been an important port for centuries, situated on England's south coast and is a fascinating place to visit. Today Southampton is one of the premier venues for sailing and watersports, with some of the best marina facilities on the south coast. An interesting mix of old and new, with superb shops, beautiful parks and gardens, an ideal base for exploring the south coast, the New Forest and the Isle of Wight

Portsmouth, historic naval port on the south coast of England, is one of the major tourist destinations of the UK. Home to the world renowned historic ships - Mary Rose, HMS Victory and HMS Warrior - Portsmouth is the centre of one of the most important naval and defence heritage regions of Europe. Alongside the heritage areas are a major seaside resort (Southsea) and the surrounding Hampshire countryside.



SUN 17TH MAY & SUN 5TH JULY

PRICE £14.00 £12.00

CONTINENTAL DAY TRIPS

BOULOGNE OLD TOWN

We travel to France by Ferry from Dover. On arrival in France we make the short journey to Boulogne where you will be free to explore this beautiful town. **This is not a shopping trip.**

SAT 10TH JAN

PRICE £17.00 PER SEAT

BOULOGNE

We travel to France by Ferry from Dover. On arrival in France we make the short journey to Boulogne and the well-stocked Auchan hypermarket, where you will find a huge range of goods for sale. You may decide to spend the whole time in Boulogne town with its wealth of bars and restaurants or divide your time between the two, you choose. At the end of the day we return to England by ferry.

WED 11TH MARCH, Sat 2nd MAY

PRICE £28.00 PER SEAT

SAT 27TH JUNE, SAT 19TH SEPT

SAT 17TH OCT SAT 21ST NOV & SUN 13TH DEC

OSTEND

Ostend is a seaside resort on the North – West coast of Belgium, the beach on the north side is very long and very sandy, there is also the Albert 1 promenade, and a pier which extends over the sea and a bustling fishing harbour. The main shopping area is in the streets to the north of the yacht harbour.

**SAT 24TH JAN, SAT 18TH APRIL &
SAT 22ND AUG.**

PRICE £29.00 PER SEAT

BRUGES, SHOPPING AND BANK HOLIDAY WEEKEND BREAK



Venice of the North, Bruges will captivate your heart, with its romantic horse drawn carriages and cobbled streets. Bruges has an abundance of historical features from Belfort with its breathtaking views over medieval Bruges itself to the Heilig Bloed Basiliek and Stadhuis. The Groeninge Museum is a must for art lovers containing a fine collection by artists such as Van Eyck, Jacob van Oost and Hugo van der Goes to name a few. A perfect way to view Bruges from an angle no street can provide would be to travel on one of the canal boat trips. The Xmas market is visited by people from all the surrounding countries and has a magical atmosphere in the centre of the city. In short,

there's something for everybody.

For those who find a day is not enough to visit this beautiful city, our weekend will allow a relaxing short break to absorb all the qualities this city has to offer. **Single room supplement will apply.**

SAT 28TH FEB, SAT 23RD MAY

PRICE £29.00 PER SEAT

SAT 18TH JULY, SAT 5TH SEPT

SUN 6TH DEC (XMAS MARKET)

SAT 29TH AUG – SUN 30ST AUG (W/END) PRICE £85.00 PER SEAT

CALAIS

For the serious shopper we head off to Calais via Ferry. When we arrive in Calais you have the choice of spending all your time (and probably money) in Cite Europe with its Carrefour Hypermarket. The shelves will be groaning with beers, wines, cheeses, chocolates, cakes and pastries! Browse around the vast selection of shops and restaurants. If that doesn't appeal then you can spend the day in Calais town, which has a lot of appeal of its own. You may even choose to do both, the choice is yours. At the end of the day we return to England by Ferry.

SAT 25TH APRIL, WED 10TH JUNE **PRICE £28.00 PER SEAT**
SAT 25TH JULY, WED 12TH AUG
WED 2ND SEPT, SAT 3RD OCT
WED 11TH NOV & SAT 5TH DEC.

CALAIS TOWN

Special price for February, this trip is to **Calais town only**. We travel by ferry from Dover to Calais. The day is yours to enjoy Calais at your leisure.

SAT 7TH FEB **PRICE £17.00 PER SEAT**

AMSTERDAM



Join us on our trip to one of the most colourful cities in the world. Where else can you find so many places of interest, famous museums, cosy pubs and fun shops and (flower) markets. Amsterdam is one of Europe's treasure troves for lovers of architecture; it has more monuments than any other city in the world. There are almost 7000 national monuments. After 8-9 hours at your leisure rejoin your drivers for the trip back to England via the ferry.

SAT 28TH MARCH, **PRICE £38.00 PER SEAT**
SAT 1ST AUG & SAT 24TH OCT.

LILLE



Lille is the fourth largest city in France and situated on the Deule River near Belgium's border. As the European Capital of Culture in 2004, Lille boasts new parks which further make it one of the most stylish cities in France. Around Lille, follow narrow and winding cobblestone streets filled with cafes and restaurants and enjoy this chic French city sure to charm all!

MON (Bank Holiday) 25TH MAY, **PRICE £29.00 PER SEAT**
SAT 20TH JUNE & SAT 8TH AUG

LE TOUQUET



Le Touquet has a reputation as the most elegant holiday resort of Northern France – the playground of the rich Parisians, with many luxury hotels. The owner of the Paris newspaper, “Le Figaro”, created the resort in 1876. Then it was an area of wild sand dunes and forest – part of a hunting estate. It became known as “Paris by the sea”, and

strict building regulations encouraged the most talented architects to create imaginative and innovative developments. In the 1920’s Noel Coward and the “smart set” from England spent weekends here and commissioned even more outstanding villas.

SAT 4TH JULY

PRICE £31.00 PER SEAT

PARIS WEEKEND

A weekend in Paris will stimulate the senses, demanding to be seen, heard, touched, tasted and smelt. Gaze rapturously at its breezy boulevards and impressive monuments from the Eiffel Tower to the Louvre and Notre-Dame. Experience the great works of art and magical lights. Savour its gourmet selection of cheeses, chocolates, wine and seafood. Paris is the essence of all things French.



Single room supplement will apply.

SAT 14TH FEB - SUN 15TH FEB

PRICE £85.00 PER SEAT

ROTTERDAM

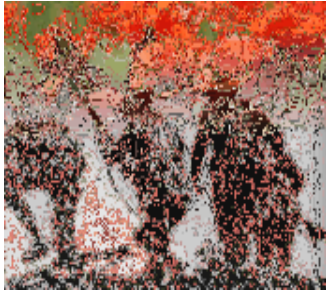
A young, dynamic, international city on the water. Rotterdam has been rebuilt after bombing in world war 2, resulting in a beautiful modern city. There are 20 museums in Rotterdam including the Wereld museum. The city now dubbed the ‘architectural capital of Europe’ with its striking modernistic buildings such as cube house and the Euromast overlooking Europe’s largest sea port.

A vibrant metropolis, whose magnificent skyline is easy to recognise from afar, but which calls for some serious attention and an adventurous spirit when you are actually there. Armed with eight unique shopping routes, varying in length and character. They all have their own ambience. A plethora of restaurants and cafes will give you a chance to relax and soak up the atmosphere.

SAT 13TH JUNE

PRICE £38.00 PER SEAT

YPRES



No one can fail to be moved by a visit to Ypres, as it is known to the English and French, Ieper to the Flemings. Walking around this pretty medieval city, it is hard to imagine the incredible highs and lows it has endured. Extreme wealth in the Middle Ages and then, less than one hundred years ago, reduced to rubble during World War I. It is a fitting reminder of people's resilience and their ability to bounce back.

SUN 30TH AUG

PRICE £38.00 PER SEAT

COLOGNE (KOLN) EASTER WEEKEND



A vital, charming city in which its great past and the present, commerce and culture create a fascinating blend. Founded by the Romans, Cologne is the oldest of the major German cities and still characterized by its 2000 years of history. Cologne has just over one million inhabitants and is the fourth-largest city in Germany. The metropolis on the Rhine with its incomparable identity annually attracts many millions of visitors. The Gothic cathedral St. Peter & Mary (World Heritage Site since 1998) with its

characteristic spires is Cologne's landmark. It houses the golden Shrine of the Three Magi, as well as numerous other outstanding art treasures. It comes as no surprise that the city regularly attracts more visitors: Cologne Cathedral is the most-visited building in Germany. The old Roman saying is confirmed once more: "Anyone who has not seen Cologne, has not seen Germany". Because there is an amazing amount to see in Cologne.

Single room supplement will apply.

SAT 11TH APRIL – SUN 12TH APRIL

PRICE £89.00 PER SEAT

SHOPPING AND MARKET DAYS

MERTON ABBEY MILLS



Merton Abbey Mills is well known as a craft shopping village, bustling weekend market and centre for diverse range of artistic events. High quality fresh produce, and the food stalls behind the long shop offer a wide variety of cuisines at reasonable prices, ideal for a family lunch out. Every second Sunday of the month, there is a full day of art, music and pottery workshops. Exciting activities for both children and families alike.

SUN 28TH JUNE, SUN 13TH SEPT

PRICE £10.00 PER SEAT

CLARKS VILLAGE

Clarks village is the UK's first and foremost outlet shopping centre and has established itself as one of the premier shopping destinations in the country. With over 90 outlets to choose from offering up to 60% off RRP on a host of famous brands, regular entertainment and live events all set within a unique village environment.

SAT 14TH MARCH

PRICE £15.00 £13.00

BLUEWATER

Get the Christmas shopping you cant put off any longer! When you have had enough of shopping why not relax with a cup of coffee or a meal, there are many restaurants and cafes for you to choose from.



SAT 28TH NOV

PRICE £11.50 PER SEAT

BURY ST.EDMUNDS

The attractive historic market town of Bury St. Edmunds, with its old streets buildings and Abbey has much to offer the visitor. Many of its buildings date from 17th and 18th Centuries. Its cobbled streets ooze history, legend and folklore and the layout of the streets are still very much as the Abbot devised them back in the 11th Century.



With big high street names there are also small unusual shops making the whole experience very enjoyable. A regular market adds to the experience and the atmosphere.

SAT 7TH MARCH, SAT 25TH JULY

PRICE £15.00 £13.00

BICESTER SHOPPING OUTLET

Bicester Village is the best place to go shopping in Oxfordshire. Located a short drive from Oxford, the Village comprises some of the best retail outlets in the country with top designer names such as Dior, Ralph Lauren and Ted Baker to name but a few. Clothes, shoes, jewellery, household items, lingerie and accessories can all be found at bargain prices.

SAT 5TH DEC

PRICE £13.00 PER SEAT

GREAT DAYS OUT

STRATFORD UPON AVON (AND WARWICK CASTLE)

Combine the finest medieval castle in Europe with Stratford Upon Avon and you are guaranteed a great day out. Travel to Stratford Upon Avon where we explore Shakespeare's old stomping ground! After a morning in Stratford we make the short journey to Warwick Castle the finest medieval castle in Europe. Inside the Castle you can enjoy



the interactive Kingmaker exhibition or perhaps venture into the dungeons! Throughout the year the Castle offers a variety of entertainment including archery, jousting and falconry with actors dressed in period costume. If you wish to explore Warwick as well, the city centre is only a few minutes walk from the castle grounds. Just make sure that you get a pass out so you can re-enter the grounds if you wish to do so. **Admission not included**

Admission approx: Adult: £16 Child: (4-16yrs) £1.50 Senior: £12
WED 20TH MAY, SAT 25TH JULY PRICE £14.00 £12.00
SAT 19TH SEPT

ISLE OF WIGHT TOUR

We travel via Southampton by ferry to the Isle of Wight, which was once described as England in miniature, cast adrift in the English Channel. The Garden Isle has everything offered by the mainland but smaller. Here are the high downs and soaring cliffs, long beaches fringed by farm and forestland. Our tour includes stops in Shanklin and Godshill before we travel back to Southampton.

SAT 6TH JUNE, SAT 29TH AUG PRICE £29.00 PER SEAT
SAT 24TH OCT

OXFORD CASTLE UNLOCKED



For the first time in 1000 years, the secrets of Oxford Castle have been unlocked revealing episodes of violence, executions, great escapes, betrayal and even romance. Walk through the ancient buildings and experience the stories that connect the real people to extraordinary events. The old buildings have been preserved and are now open to the public revealing a time capsule, allowing the buildings to tell their story. Book early to avoid disappointment as ticket sales for the castle have risen by 300% in 2008.

Admission: Adult: £8 Child (under 15yrs): £6

**SAT 6TH JUNE, SAT 26TH SEPT &
SUN 25TH OCT**

PRICE £14.00 £12.00

STONEHENGE & SALISBURY



Superbly situated in southern England's rural heartland, few destinations can match the amazing diversity of Salisbury and Stonehenge - with a history dating back over 5,000 years there is no shortage of places to visit.

Salisbury Cathedral has Britain's finest 13th century cathedral with the tallest spire in Britain. Stonehenge stands impressively as a prehistoric monument of unique importance, a World Heritage Site, surrounded by remains of ceremonial and domestic structures.

SAT 11TH APRIL, WED 24TH JUNE

PRICE £14.00 £12.00

BATH

The World Heritage City of Bath is a unique city; its hot springs, Roman Baths, splendid Abbey and Georgian stone crescents have attracted visitors for centuries. You can join the Classic City Tour (a hop-on hop-off guided tour which visits 16 locations), or perhaps view the city from a boat or an exclusive horse-drawn open-top carriage tour!



SAT 13TH JUNE

SAT 12TH SEPT

PRICE £15.00 £13.00

CHEDDAR GORGE or WOOKEY HOLE



Cheddar Gorge, a place of wild and rugged beauty, is a karst limestone and calcareous grassland nature reserve and home to many rare plants and animals, including endangered Greater Horseshoe bats. Cheddar Caves, inhabited by our ancestors up to 40,000 years ago, were discovered by Messrs Gough & Cox, enterprising Victorian showmen, and are world famous for their spectacular stalactite and stalagmite decorations, whose beautiful colours are mirrored in pools of water. Easy-to-use audio-guides in English, French and German tell the story of the caves' formation and discovery. These caves also fired the imagination of JRR Tolkien, author of the trilogy "Lord of the Rings", on his honeymoon visit in 1916. **Admission not included. Adult £15 Child (5-15 yrs): £9.50**

Wookey Hole has been revamped, restored and is totally remarkable, Britain's Oldest Tourist Attraction is bursting onto the holiday scene in an explosive mix of History, Mystery and Fun. With new attractions, great new facilities and the classic glory of Britain's most spectacular underground caverns, the centuries-old site near Wells in Somerset has been given a brand new lease of life.

Open now is the "Valley of the Dinosaurs". A full size King Kong now sits at the entrance. Come and stroll amongst our full sized dinosaurs, or relax in our "Enchanted Fairy Gardens" with fairies, dragons and elves. **Admission not included. Adult £15 Child (3-14 yrs): £10**

SUN 14TH JUNE &

MON 7TH SEPT

PRICE £15.00 £13.00

WYE VALLEY TOUR



Join us on our beautiful tour around the best of the Welsh countryside and take time to visit Tintern abbey and Ross on Wye. The Wye Valley area of outstanding natural beauty straddling the border between England and Wales, it is

renowned as one of the most dramatic and scenic landscape areas in southern Britain.

SAT 27TH JUNE

WED 5TH AUG

PRICE £17.00 £14.00

CANTERBURY

Canterbury has a whole host of history and heritage for you to discover, it has 2 castles, 6 museums, a Cathedral and St Augustine's Abbey to name but a few. Visit the "Canterbury Tales" and join the pilgrims on their travels from London. The newly opened Whitefriars shopping centre is not to be missed.

WED 29TH JULY

PRICE £14.00 £12.00

CAMBRIDGE AND ELY



Cambridge has profoundly shaped the world we live in, and there's a real sense of living history almost everywhere you look. An incredibly family-friendly place with a host of attractions to keep everyone happy. Also visit the historical residence of Oliver Cromwell and one of England's most beautiful and largest Cathedrals at Ely.

THURS 16TH APRIL, THURS 11TH JUNE

PRICE £14.00 £12.00

COTSWOLDS TOUR



The Cotswolds are an area of outstanding natural beauty, with gentle rolling hills, honey coloured stone cottages, streams and rivers criss-crossed with ornate stone bridges. Some of the loveliest Cotswold villages lie to the northeast such as Stowe-on-the-Wold perched on its hilltop, Chipping Campden.

Towns such as Broadway, Bourton-on-the-Water and Moreton are all interesting villages to see.

SAT 14TH FEB, SAT 11TH JULY

PRICE £14.00 £12.00

SAT 14TH NOV

ANNUAL EVENTS

BOURNEMOUTH AIR FESTIVAL 2009

In 2008 it was all eyes to the skies as the town hosted its first Air Festival, as up to 750,000 people crowded on the seafront to watch the spectacular air displays above the town's beaches. It was the first event of its kind to take place on the beaches of Bournemouth, and even before the four day event had finished, another air festival for this year was already confirmed.

SAT 22ND AUG

PRICE £16.00 £13.00



SPALDING FLOWER SHOW 2009



Surely this must be one of the most spectacular and popular events of the year, when the town of Spalding transforms into a kaleidoscope of colour. In the afternoon the floats bedecked with cut flowers take to the streets for the famous flower parade.

Admission not included. Approx £7.00

SAT 2ND MAY

PRICE £17.00 £12.00

JACK IN THE GREEN



The Jack-in-the-Green festival in Hastings is based on a tradition, which started in the 1830s, died out at the start of the 20th century, but was revived in 1979 by a group called Mad Jack's Morris Dancers. It is now an annual event which takes place during the bank holiday weekend at the start of May. The main event is on the Monday (a public holiday in the UK).

MON 4TH MAY

PRICE £14.00 £12.00

Find out more by visiting the website:

<http://www.visithastings.com/Hastings/events/jackinthegreen/MayDayProcession.aspx>

RNAS YEOVILTON AIR DAY

At the RNAS Yeovilton Air Day see fantastic displays from military and civilian aircraft from around the world. From fast jets to spitfires to the traditional commando assault finale this day is not to be missed. Plenty of ground action including funfairs, arena display, helicopter flights, vehicle exhibitions and much, much more. This year is the 100th anniversary of the birth of naval aviation in 1909.

SAT 11TH JULY

admission included

PRICE £36.00 £34.00

WHITSTABLE OYSTER FESTIVAL

Whitstable has been associated with oysters for hundreds of years. Indeed, the roots of this festival go back to Norman times, when it was the custom for fishers and dredgers to celebrate with an annual festival. These days it lasts for 9 days and kicks off with a parade, which follows a horse-drawn dray delivering the oysters. There are marching bands, people in period costumes and dance troupes.

SAT 18TH JULY

PRICE £14.00 £12.00

DICKENSIAN XMAS MARKET

A perfect way to start the festive season. Rochester's Victorian High Street glows with the sights and sounds of a pre-Christmas scene from a hundred years ago – Scrooge, the ghost of Christmas Past, carol singers, bell ringers, street theatre & children's shows are but a few of the wonderful surprises that await you. All that and you are guaranteed snow whatever the weather!!

SUN 6TH DEC

PRICE £15.00 £13.00

XMAS LIGHTS WITH SANTA

To end the list of festive daytrips, we have the most popular of all as our last trip of the year. Enjoy the Xmas lights with us as we tour the streets of London, with our staff dressed up in festive attire. As usual there will be mince pies, sausage rolls and a drink passed around.

SUN 20ST DECEMBER



PRICE £9.00 £7.00

KIDS ZONE

THORPE PARK

Too many attractions to describe so here is just the list for you. Stealth, Colossus, Detonator, Nemesis, Inferno, Quantum, Rush, Samurai, Slammer, Tidal Wave & Vortex. Can you handle them? **Admission not included**

Adult: £36 Child: £27



MON 13TH APRIL

SAT 1ST AUG

PRICE £11.00 £9.00

LONGLEAT SAFARI

As seen on BBC TV 'Animal Park' located in Warminster, Wiltshire. Set within 900 acres of Capability Brown landscaped ground lie a host of attractions. The Safari Park offers an amazing opportunity to discover some of the world's most magnificent animals plus the world's largest hedge maze, Longleat railway and much more. Customers wishing to tour around the Safari Park on our coach please ask the driver when this will be.



Admission included

WED 27TH MAY

WED 5ND JULY

PRICE £29.00 £24.00

DRAYTON MANOR THEME PARK



Everyone's favourite theme park, packed with a host of great rides and attractions set in 280 acres of lakes and parkland. Drayton Manor features some of the biggest, wettest and scariest rides around! Drayton Manor Zoo is home to over a hundred species from throughout the world – plus Dinosaurland, museums, shops, cafes, bars and restaurants – and Much more! It's a fantastic fun-filled day for everyone! **Admission not included**

Adult (12 yrs +) £23 Child (4-11 yrs) £19

To find out more visit the website: www.draytonmanor.co.uk

FRIDAY 24TH JULY

PRICE £15.00 £13.00

LEGOLAND OR CHESSINGTON

Children aged 2 – 12 can take to the road, soar through the skies and sail the seas in complete safety. With over 50 interactive rides, live shows, building workshops, driving schools and attractions and set in 150 acres of beautiful parkland, LEGOLAND Windsor is a different sort of family theme park.

Beanoland, Forbidden Kingdom, Land of the Dragons, Market Square, The Zoo plus many many more await you at Chessington. Opened in 2008 is a Sea Life Centre with over 20 marine life displays housing species from tiny shrimps and starfish to magnificent sharks and stingrays. **Admission not included. Adult: £36 Child: £27**

SUN 12TH APRIL & FRI 28TH AUG

PRICE £13.00 £11.00

GUILDFORD SPECTRUM



Guildford Spectrum is the most exciting leisure complex in the UK. There is a 32 lane Tenpin Bowling Centre, an Olympic sized Ice Rink, 25m Competition Pool, Leisure Pool, Teaching and Diving Pools, Health and Fitness Suite, Sports Arena, Aerobics Studio, Athletics Stadium, American Pool Tables and four level Soft-play area. It is a one-stop leisure facility where all these exciting

activities can be enjoyed under one roof! Professional ice hockey adds to a programme of spectator events that also includes light entertainment, ice shows and national to international sporting events.

Admission not included. www.guildfordspectrum.co.uk

SAT 31ST OCT

PRICE £13.00 £11.00

SPECIAL INTEREST

KENNET & AVON CANAL HORSE DRAWN BOAT TRIP

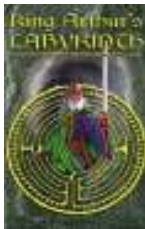


We start today's trip by taking you to Marlborough where you will have time for some lunch and a bit of shopping, before we move on to Kintbury where we meet up with the Kennet Valley Barge for our two-hour cruise. Watch as the two horses work eagerly and tirelessly throughout the cruise. **Barge Cruise included.**

SUN 26TH JULY

PRICE £20.00 £17.00

KING ARTHUR'S LABYRINTH UNDERGROUND ADVENTURE



An exciting underground adventure unfolds as you sail along a subterranean river, through the great waterfall, deep inside the spectacular Labyrinth and far into the past, delve into a world of myths, legends and storytelling. The Arthur we tell of is the hero of the earliest legends, a Dark Age warrior fighting the Saxon invader to bring peace to the Island of Britain. **Admission not included.**

Adult: £6.50 Child: £4.65 Senior: £5.85

SAT 23RD MAY

PRICE £20.00 £18.00

Terms and Conditions

1. We require full payment when booking for any excursion, or extended tour. We will require a deposit of £30.00 or 35% whichever is greater. No seats can be reserved without complying with the above.
2. If you, or any member of your party, wish to cancel their excursion/tour, you must notify us immediately. In any case the date of cancellation will be the date on which the notice is received by Impact. The person who made the booking must sign the letter of cancellation.
Cancellation charges will apply on the following scale:
Cancellation with less than 7 days notice- no refund
Cancellation between 7 and 21 days notice- 50% refund
Cancellation over 21 days notice- 90% refund
In the event of an excursion or tour attracting less than a sufficient number of bookings we reserve the right to cancel that excursion or tour. Should it become necessary to make such a cancellation clients will be given a minimum of 72 hours notice.
3. You are solely responsible for ensuring that all necessary travel documents e.g. Passports, Visas, Vaccination Certificates etc, are valid and effective. Please note that all non-E.U passport holders must now obtain a special visa for entry into France and some other E.U countries.
4. Your contract made under our terms and conditions is subject to English Law and Jurisdiction.
5. Other matters:
 - a. You may not bring a pet or other animal on the trip or holiday.
 - b. You may not play a cassette player or radio on the coach.
 - c. Smoking is not allowed on coaches. If you ignore this rule and thereby cause inconvenience, distress or disappointment to other passengers, you will be liable to meet any claims relating to any inconvenience, distress or disappointment, brought against the company by other passengers, including all legal expenses.
 - d. You are responsible for ensuring that you are at the correct departure point at the correct time, and we cannot be held liable for any cost or expense suffered by clients due to their late arrivals at any departure point. As a precaution we should strongly advise all clients to arrive at their departure point 10 minutes prior to the departure time of their excursion/tour.
 - e. It is your responsibility to ensure that your belongings are on board the coach you are travelling on. We strongly recommend holiday insurance that provides cover in case of loss or damage on day trips or tours.

- f. Where accommodation is included in a particular tour it will be on a bed and breakfast basis only, unless otherwise stated.
 - g. Accommodation is based on two sharing unless otherwise stated. Any client travelling alone will be charged a single supplement.
6. We must point out Impact reserve the unconditional right to refuse a booking or terminate a passengers excursion in the event of any unreasonable conduct, which in our opinion is likely to cause distress, damage, danger or annoyance to our other customers, employees, property or to a third party. This includes any passenger who fails to advise us of any medical condition or disability. Upon such refusal or termination our responsibility for your excursion ceases. Full cancellation charges will apply and we will be under no obligation whatsoever for any refund, compensation or loss you may incur.
7. If you have a complaint during your excursion please immediately inform our representative who will do their best to rectify the problem. If the matter cannot be put right on the spot, you must record details of your complaint in writing with our representative or address your complaint to Impact 1 Leighton Rd, Ealing W13 within 28 days of your excursion. We cannot consider any claims if this procedure is not adhered to.
8. We accept responsibility for the acts/or omissions of our employees, agents, sub-contractors and suppliers and for ensuring we provide the services supplied to you as described in this brochure and to a reasonable standard. We shall not be responsible or accept liability for death, bodily injury or illness caused to the client or signatory to the contract and/or other named persons on the booking form, except when resulting from the negligent acts/omissions of our employees or agents, suppliers, sub contractors, servants and/or agent of same whilst acting within the scope of/or in the course of their employment. Any claims arising there from shall be subject to English Law in respect of any question of liability or quantum, and all proceedings shall be within the exclusive domain of English courts.

The published running times of services are estimates only and we will not be liable for any loss (however caused) arising from delay or failure to operate services in accordance with published timings. We accept no liability whatsoever for delays caused by circumstances beyond our control. This includes delays caused by industrial disputes, closure of ports/roads or mechanical breakdowns.

Pickup Point	Perivale Dawlish Ave	The Grapes In Hayes	Target Roundabout In Northolt	Lidl's Layby In Southall	Red Lion Pub In Greenford	Lidls In Hanwell	Deans Gdns Uxbridge Rd West Ealing	Impact Office in Northfields	Ealing Town Hall W5	Acton Town Hall W3	McDonalds In Shepherds Bush Green	Goddards At Brentford
A1	0445	0520	0530		0540 0615	0550	0555		0605	0620	0630	0500
A2	0445	0645	0630	0625	0715	0605		0600	0555	0545	0530	0500
A3	0545	0750	0740	0730	0845	0705		0700	0650	0630	0615	0600
A4	0700	0915	0905	0855	1145	0830		0820	0810	0750	0740	0715
A5	1015	1115	1130	1135	1630	1155		1200	1205	1215	1230	1030
A6	1515	1600	1610	1620	0115	1640		1650	1700	1715	1730	1530
A7	0015	0045	0055	0105		0125		0135	0145	0155	0205	0030
A8	0600	0815	0805	0755	0745	0730		070	0710	0650	0640	0615

NAME		MR/MRS/MISS	TELEPHONE NUMBER	
ADDRESS		Return to	1 Leighton Road Ealing London W13 9EL 020 8579 9922	
EXCURSION		Date of Outing	Number of Seats	Amount Due
PASSPORT NUMBERS				
PICKUP POINTS : (please circle)		Perivale - Goddards Brentford - The Grapes Hayes - Target Roundabout Northolt Southall Lid's - Red Lion Greenford - Lid's Hanwell - Impact Office Northfields Town Hall Ealing - Acton Town Hall - McDonalds Shepherds Bush		

I enclose a payment for the value of £_____ as deposit/full payment for the outings listed above. Please make cheques payable to: Impact Group Plc

Signed _____ Date _____